



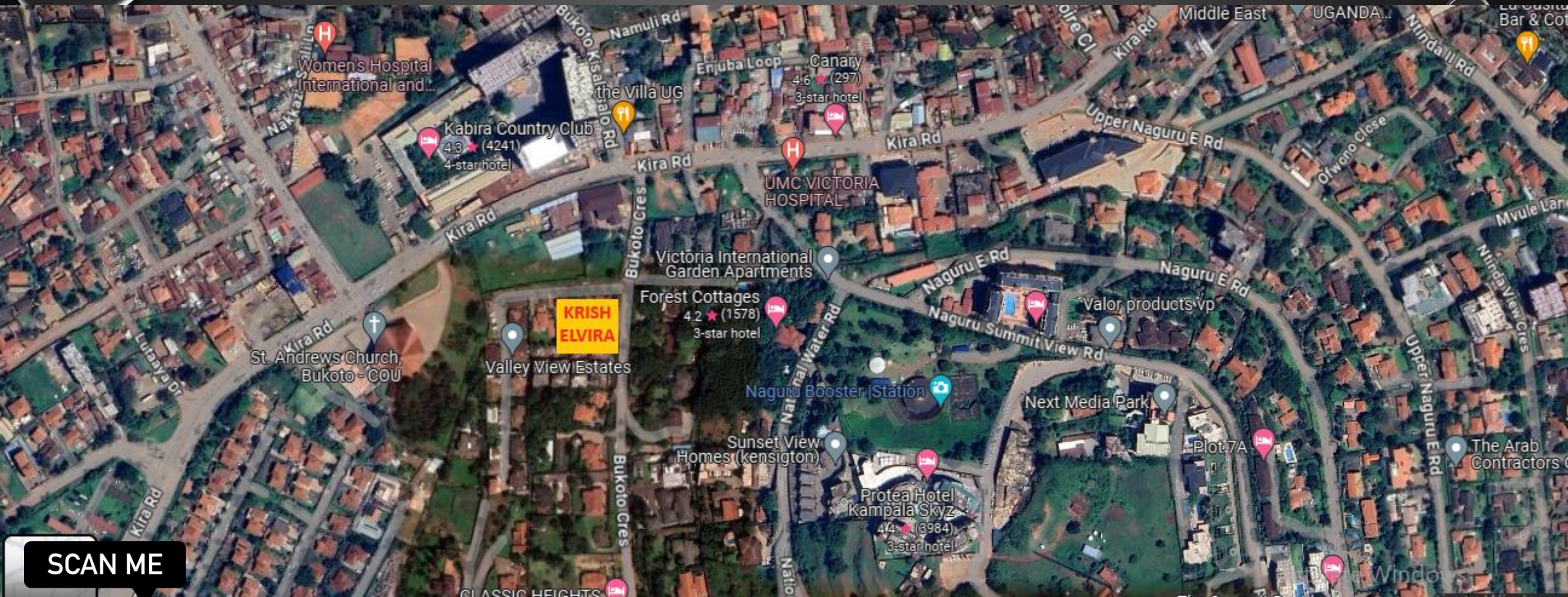
**KRISH**

**ELVIRA**

*Naguru*







SCAN ME



SITE LOCATION





# ***KRISH ELVIRA***

Living at Krish Elvira really is like Living In A World  
Curated Entirely For You.

It All Begins With The Very Building You Live In.  
Through A Host Of Carefully Selected Physical  
Amenities,

It's The Perfect Setting For a Experience A Level Of  
Peace And Tranquility Only A Few Have Known To Exist.



**KABIRA COUNTRY  
CLUB VIEW/ BUKOTO  
VIEW**

**NAGURU VIEW**

**BUKOTO CRESCENT**

**KOLOLO/ NAGURU VIEW**





# ***KRISH ELVIRA***

Located at Bukoto Crescent, Near Kabira  
Country Club, Naguru

Krish Elvira is a 12 story building which has;

20 units of 3BHKs + 1 Maid's room  
measuring 220 Square meters

11 units of 3BHKs measuring 166 Square  
Meters

11 units of 2BHKs measuring 130 Square  
Meters

2 Penthouses of 5BHKs + 1 maid's room  
measuring 384 Square Meters with a  
personal terrace of 42 Square Meters







**BUKOTO/ NAGURU VIEW**





BUKOTO CRESCENT

ACCESS ROAD





**LOWER GROUND FLOOR PLAN**







Typical Floor Plan  
1<sup>st</sup> to 10<sup>th</sup> Floor

KABIRA COUNTRY CLUB/ NAGURU VIEW



BUKOTO CRESCENT ROAD VIEW

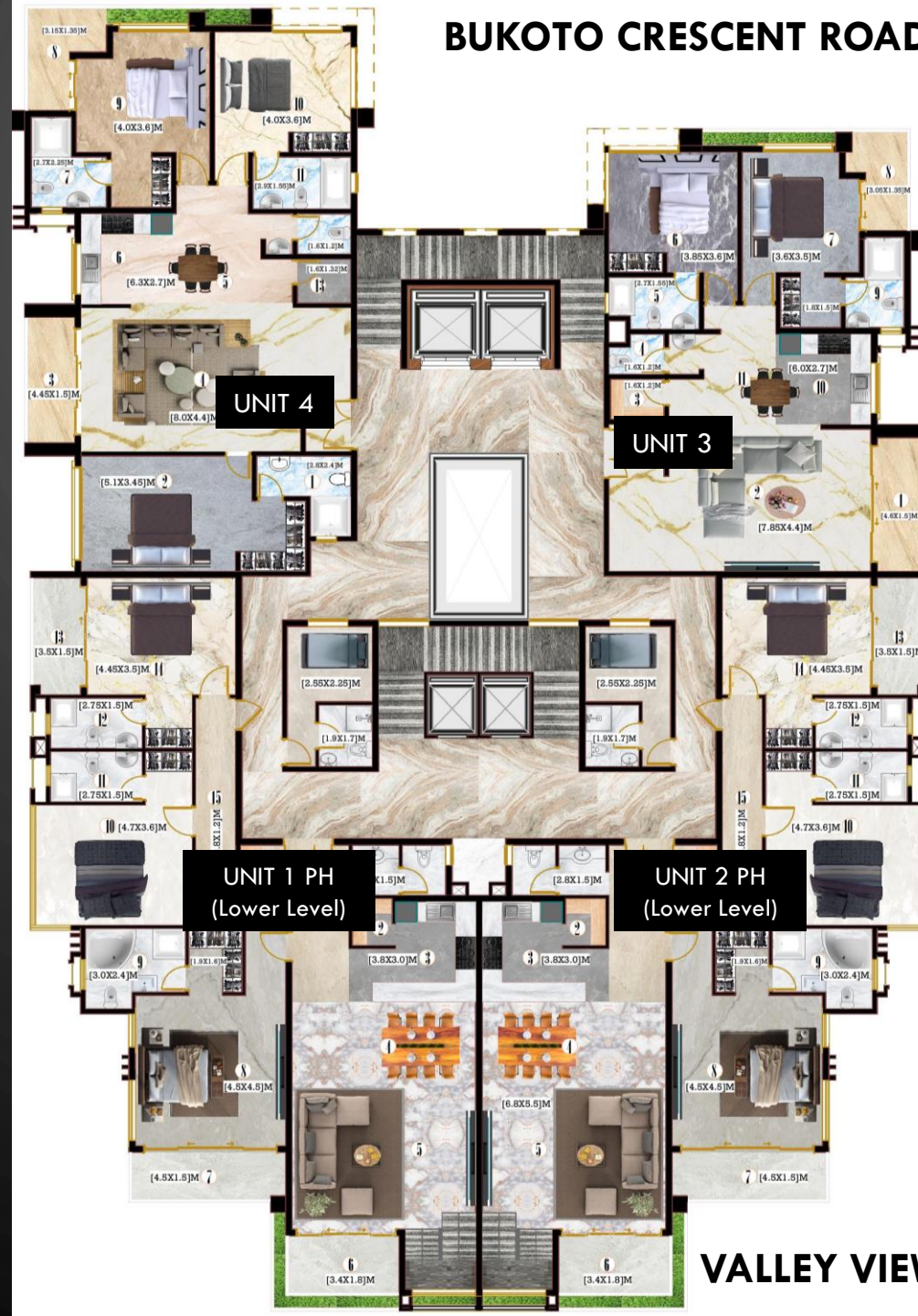
NAGURU VIEW

VALLEY VIEW / KOLOLO/ NAGURU VIEW



Typical Floor Plan  
11<sup>th</sup> Floor

KABIRA COUNTRY CLUB/ NAGURU VIEW



BUKOTO CRESCENT ROAD VIEW

NAGURU VIEW

VALLEY VIEW / KOLOLO / NAGURU VIEW



Typical Floor Plan  
12<sup>th</sup> Floor

KABIRA COUNTRY CLUB/ NAGURU VIEW



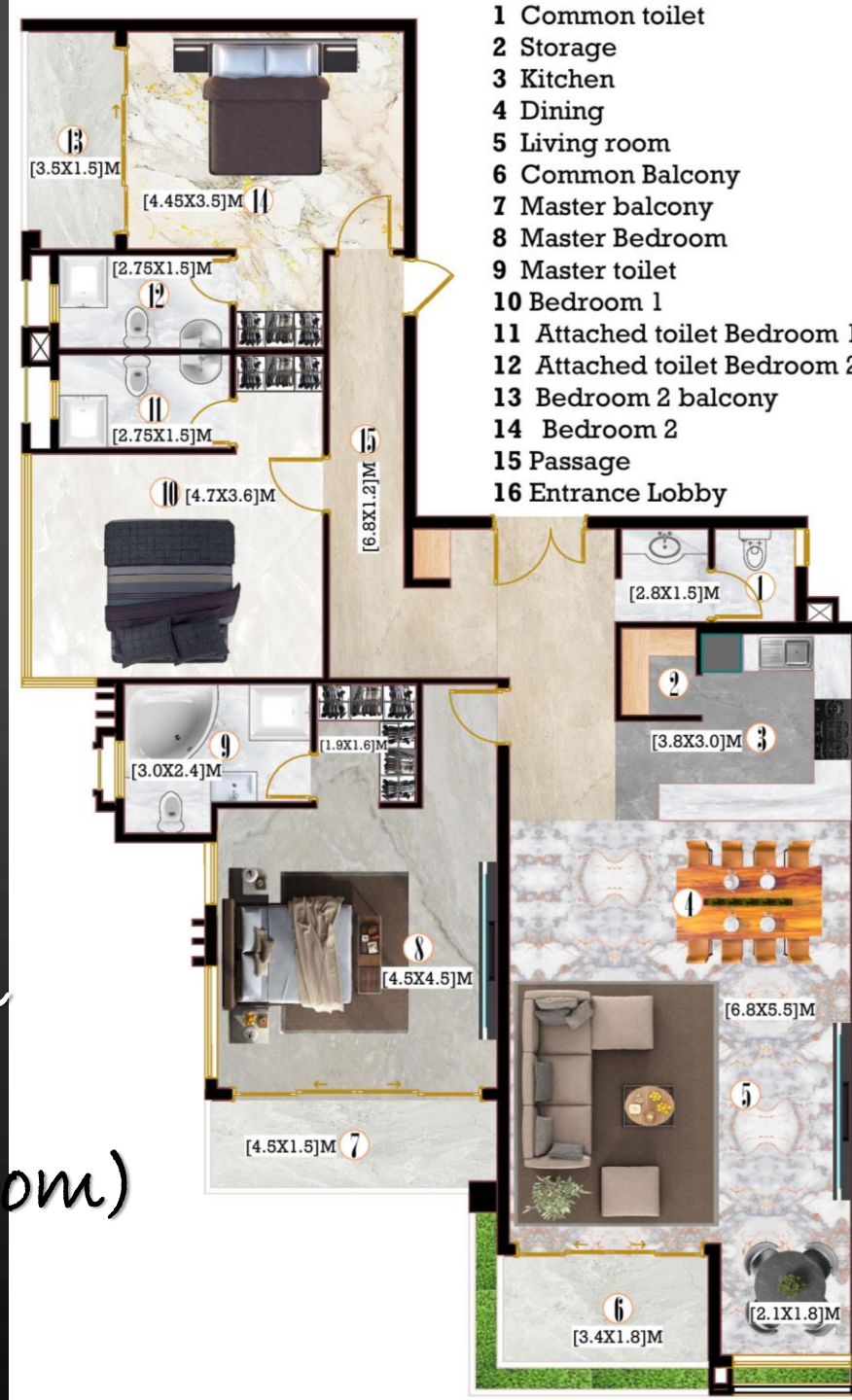
BUKOTO CRESCENT ROAD VIEW

NAGURU VIEW

VALLEY VIEW/ KOLOLO/ NAGURU VIEW

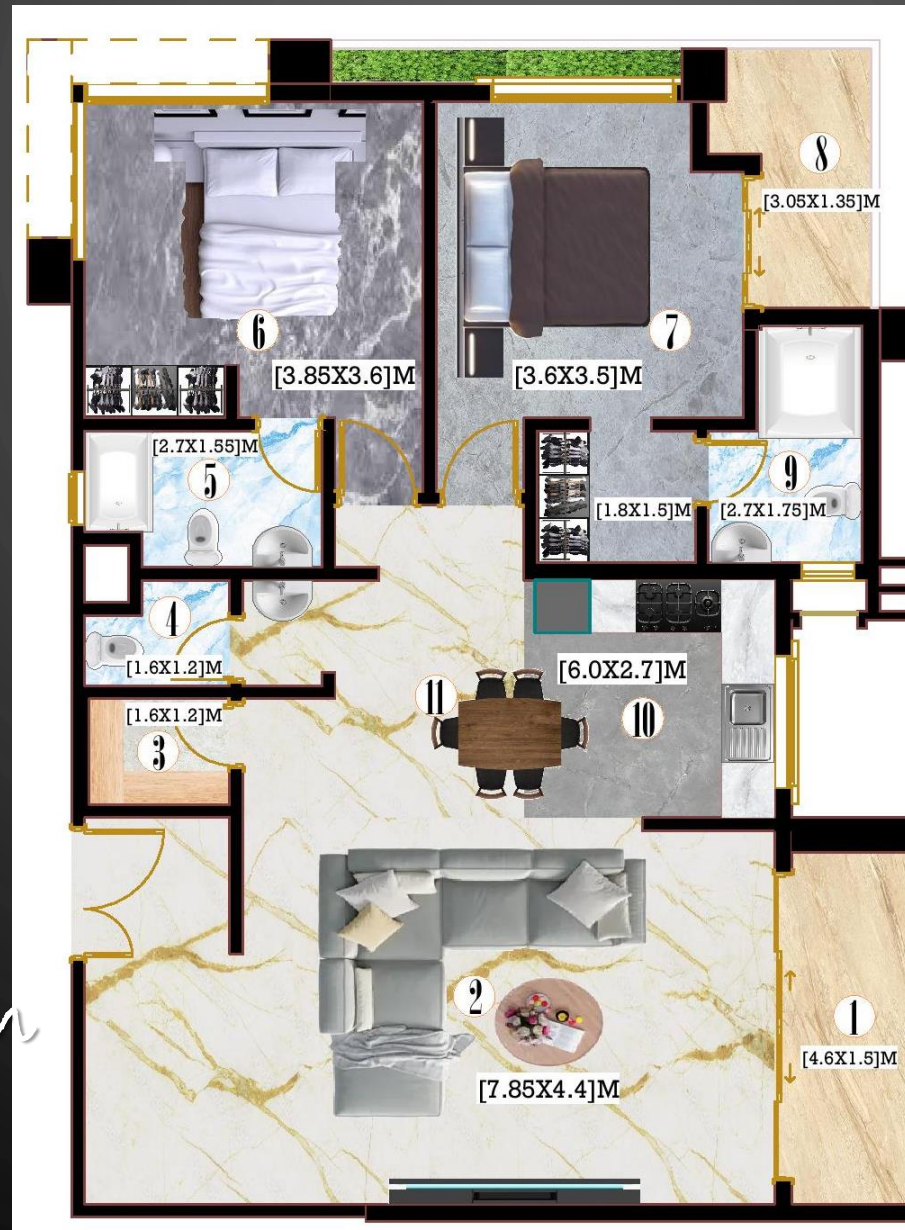


Typical Unit Plan  
Unit 1 & 2  
(3BHK + 1 maid's room)  
220 sqm





Typical Unit Plan  
Unit 3 (2BHK)  
130 sqm

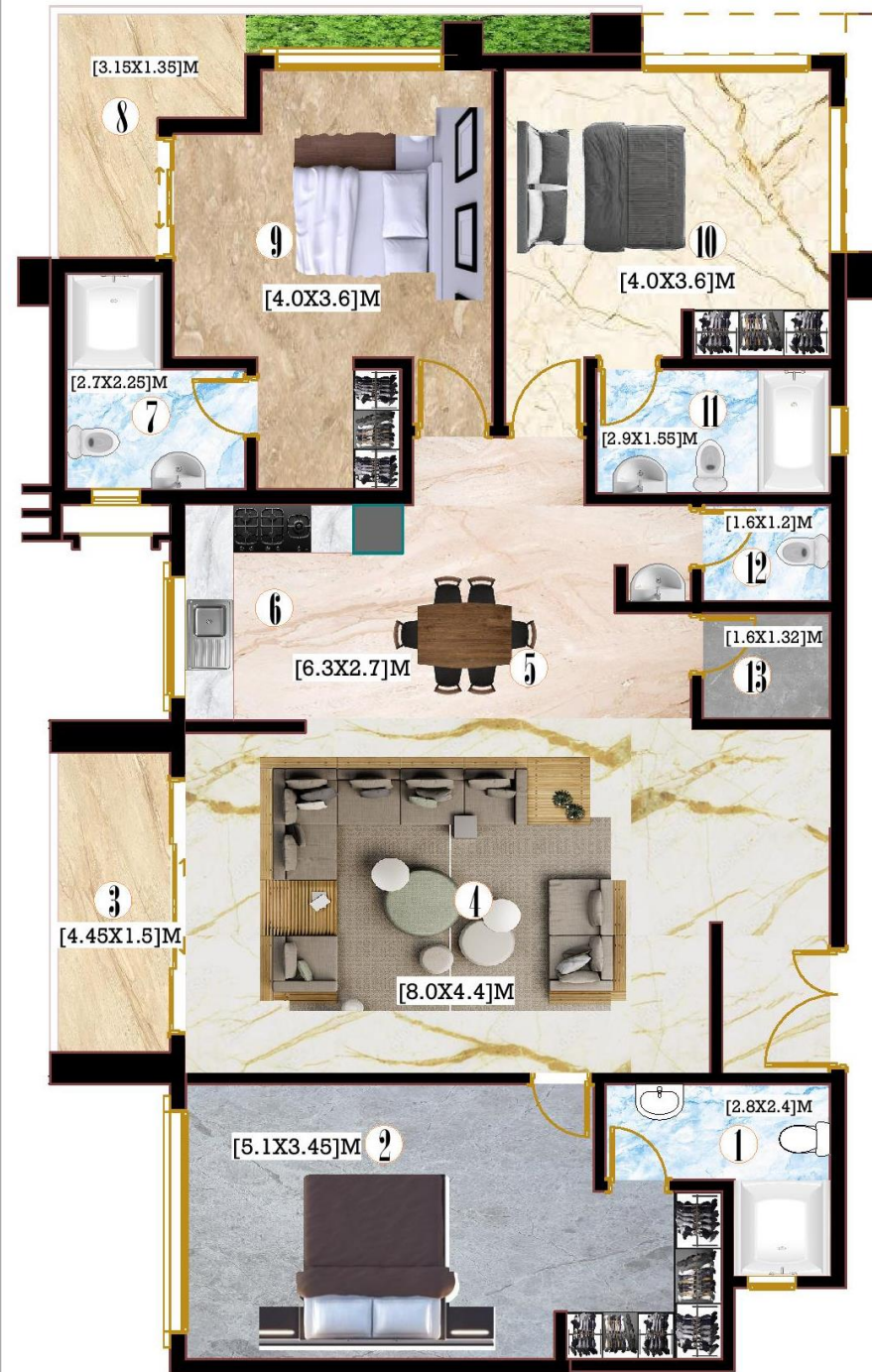


## LEGEND

- 1 Attached toilet Bedroom 1
- 2 Bedroom 1
- 3 Balcony
- 4 iving Room
- 5 Dining
- 6 Kitchen
- 7 Master toilet
- 8 Master Balcony
- 9 Master Bedroom
- 10 Bedroom 2
- 11 Attached toilet Bedroom 2
- 12 Common toilet
- 13 Storage



Typical Unit Plan  
Unit 4 (3BHK)  
166 sqm



## LEGEND

- 1 Attached toilet Bedrom 1
- 2 Bedroom 1
- 3 Balcony
- 4 iving Room
- 5 Dining
- 6 Kitchen
- 7 Master toilet
- 8 Master Balcony
- 9 Master Bedroom
- 10 Bedroom 2
- 11 Attached toilet Bedroom 2
- 12 Common toilet
- 13 Storage



# Typical Unit Plan Penthouse (5BHK + 1 maid's room) Lower Level 384 sqm





Typical Unit Plan  
Penthouse  
(5BHK + 1 maid's room)  
Upper Level  
42 sqm Personal Terrace







# AMENITIES





# AMENITIES

- *Luxurious Re-creational Areas as;- Restaurant Area, Bar Area, Game room, Gym Room, Massage room, Sauna, Jacuzzi, Swimming Pool which comes with Membership to the Tenants and Owners*
  - *Ample and Spacious with Allotted Parking Space with Automated RFID Parking System*
- *Silent Back-up Generators for the Entire Building and Lifts where each Apartment unit its own sub meter for the power consumed by your apartment unit from the Generator*
- *24 x 7 CCTV Cameras, Electric Fences on the Compound Walls and an Operational Control Room*
  - *Biometrics Security at your Apartment Unit Main Door such as Fingerprint Lock Systems*
- *Double Glazed Aluminum Windows which are Sound Proof that eliminate maximum Sound inside your Apartment Unit*
  - *Fire Fighting Equipment's to cover fire outrages*
  - *Access Control Lifts such as the Lifts will be operated by Card System*





# KRISH GROUP



[www.krishgroupuganda.com](http://www.krishgroupuganda.com)

[krishgroup7@gmail.com](mailto:krishgroup7@gmail.com)



+256 701 292 556

+256 783 572 335

<https://whatsapp.com/channel/0029VaAZDN04tRrq6ysqiH2r>



102, Kailash Apartment  
Plot 7, Kataza Close  
Opposite Village Mall  
Bugolobi